

# KING BELL PRODUCER Company Limited.

## MATERIAL

### MARKETING

Marketing: OEM Customer /Main markets are Middle East, North African Countries and Africa

Future : World Wide

### DISTRIBUTOR

Our Current Distributor: Our distributor product brand "SALAM" are; UAE, KUWAIT, QATAR, SAUDI ARABIA, ALGERIA, TUNISIA, JORDAN

### Target & Marketing Plan

- A- In Africa
- B- Expand and appointing agent distributor to world wide
- C- Brand promotion in to the world wide with its brand (SALAM,) as Exclusive Agent
- D- Looking forward to have new partner of Business cooperation

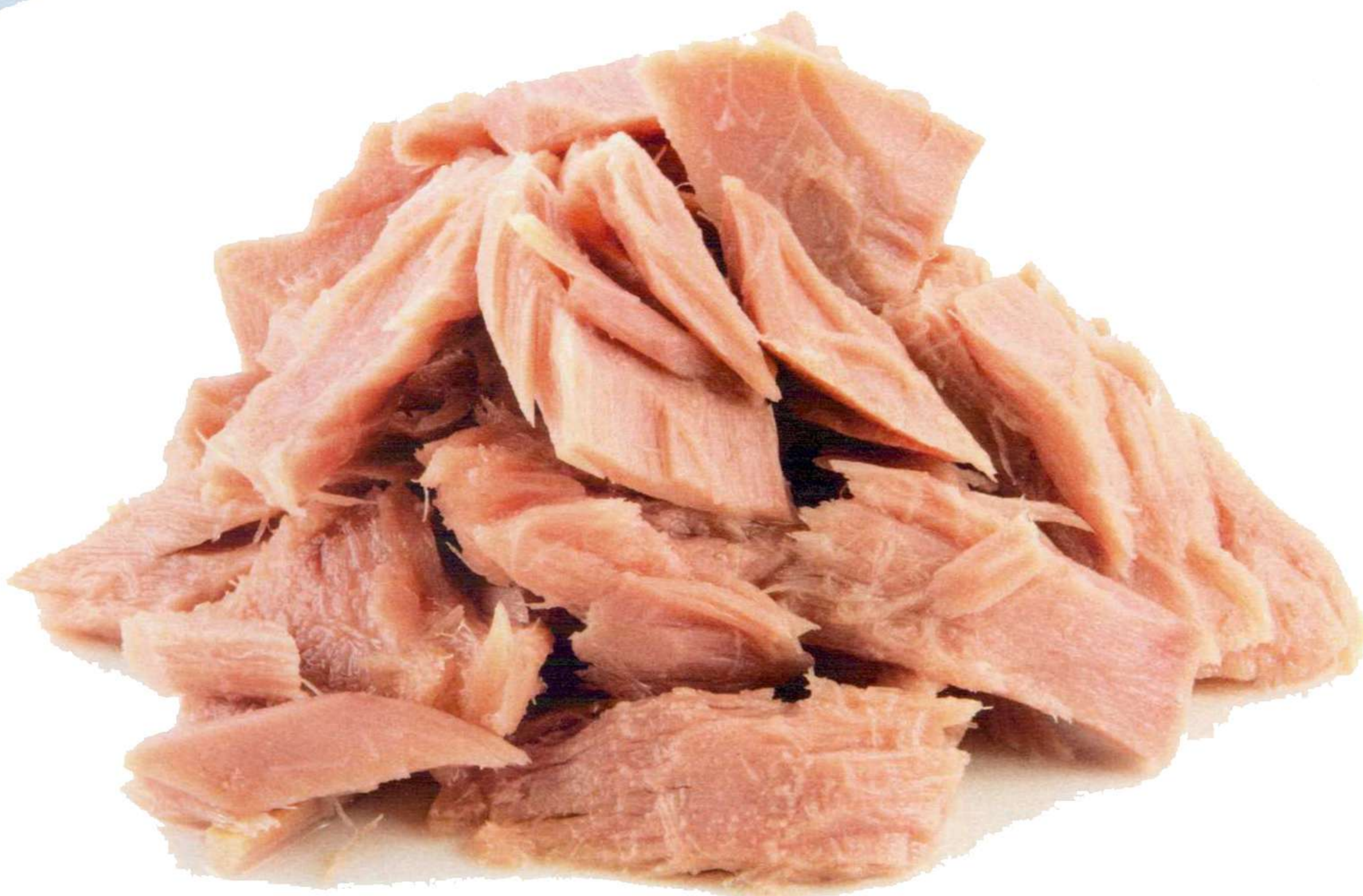
## OUR HEALTHY TUNA FISH

FOOD FOR THOUGHT  
GOOD FOR HEALTH



### VISION AND FUTURE

King Bell does not stop just there but keep planning to expand its products to worldwide. King Bell has never stop to search and look forward to the business opportunity by spend more time visiting our new partner at oversea and initiating our new products in to new markets. As we have a large area of land and our market has grown stronger and wider we have planned and prepared to expand our factory and production capacity to reach our customer demand at very near future.



WhatsApp: +66 854208289  
Mobile: +66 854208289  
Tel: +66 3544-6599



jk.kingbell@hotmail.com  
www.kingbellfood.com



189 MOO 8 ,DONCHEDEE, DONCHEDEE,  
SUPHANBURI 72170 THAILAND

# KING BELL PRODUCER Company Limited.

## Cleaning befor work



WhatsApp: +66 854208289  
Mobile: +66 854208289  
Tel: +66 3544-6599



jk.kingbell@hotmail.com  
www.kingbellfood.com



189 MOO 8 ,DONCHEDEE, DONCHEDEE,  
SUPHANBURI 72170 THAILAND



Preparing



Preparing for packing



WhatsApp: +66 854208289  
Mobile: +66 854208289  
Tel: +66 3544-6599



jk.kingbell@hotmail.com  
www.kingbellfood.com



189 MOO 8 ,DONCHEDEE, DONCHEDEE,  
SUPHANBURI 72170 THAILAND

Preparing for steamed fish



# KING BELL PRODUCER Company Limited.

## Preparing for packing



WhatsApp: +66 854208289  
Mobile: +66 854208289  
Tel: +66 3544-6599





jk.kingbell@hotmail.com  
www.kingbellfood.com



189 MOO 8 ,DONCHEDEE, DONCHEDEE,  
SUPHANBURI 72170 THAILAND

Size Packing

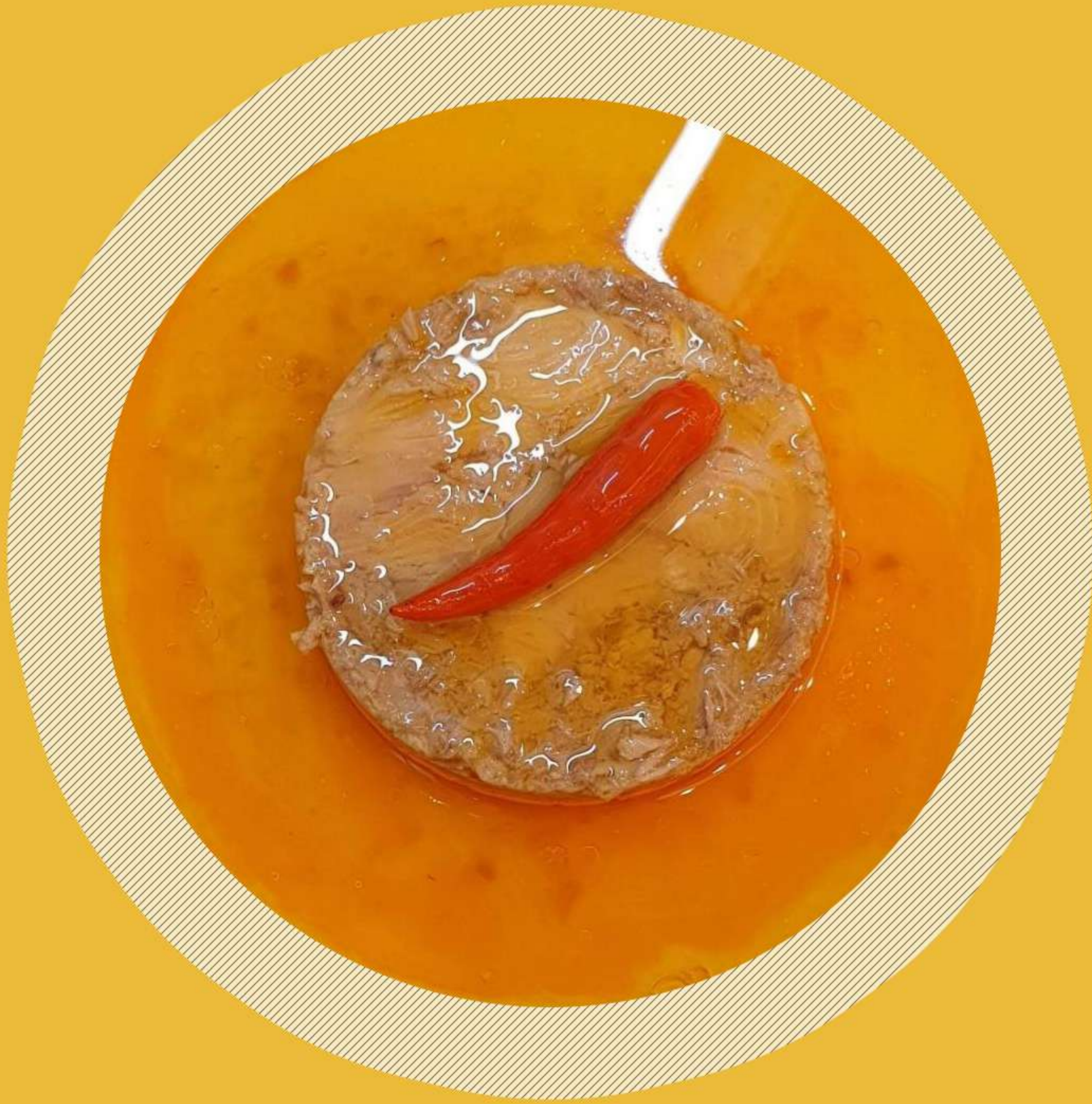
Packing Style	N W / D W	PACKING (Grams)	CAN SIZE/EOE , Normal Lid	QUANTITY /1X20 FCL
Solid		48 48	307x113 307x113	1,800CTNS
Chunk 	95/67 g	48	211x109 EOE	3,300CTNS
	140/98 g	48	307X108	2,200CTNS
	150/105 g	48	307X108	2,200CTNS
	160/112 g	48	307X108	2,200CTNS
	170/120 g	48	307X108	2,200CTNS
	185/130 g	48	307X111	1,850CTNS
	1,700/1,190 g	12	603x408	1,600CTNS
Shredded Flake 	95	48	211x109 EOE	3,300CTNS
	140	48	307X108	2,200CTNS
	150	48	307X108	2,200CTNS
	160	48	307X108	2,200CTNS
	170	48	307X111	1,850 CTNS
	185	48	307X111	1,850 CTNS

The most common varieties of canned tuna are ALBACORE YELLOWFIN TONGOL and SKIPJACK.



KING BELL PRODUCER  
Company Limited.

## Finish Goods



WhatsApp: +66 854208289  
Mobile: +66 854208289  
Tel: +66 3544-6599



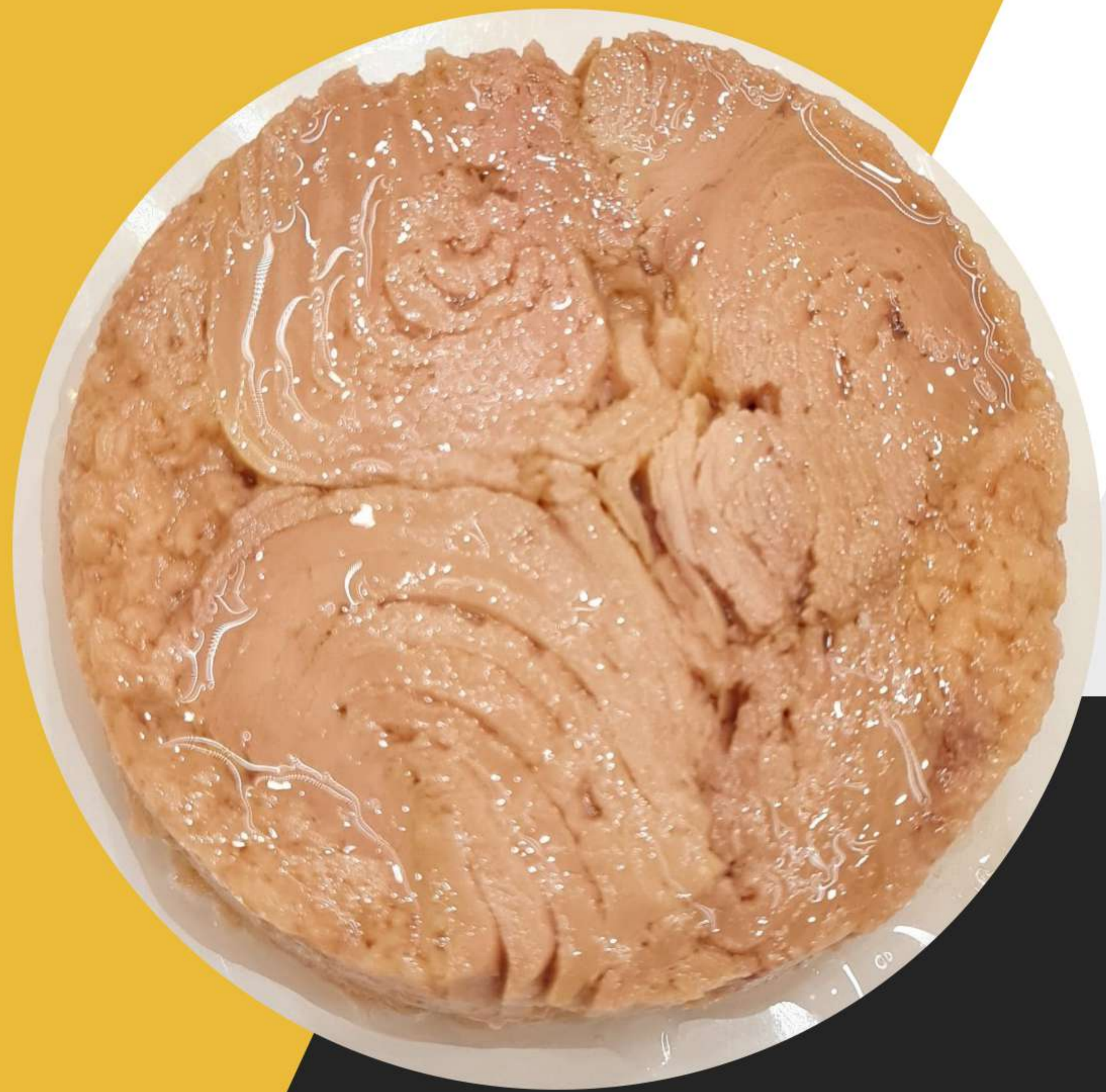
[jk.kingbell@hotmail.com](mailto:jk.kingbell@hotmail.com)  
[www.kingbellfood.com](http://www.kingbellfood.com)



189 MOO 8 ,DONCHEDEE, DONCHEDEE,  
SUPHANBURI 72170 THAILAND

KING BELL PRODUCER  
Company Limited.

## Finish Goods



WhatsApp: +66 854208289  
Mobile: +66 854208289  
Tel: +66 3544-6599



[jk.kingbell@hotmail.com](mailto:jk.kingbell@hotmail.com)  
[www.kingbellfood.com](http://www.kingbellfood.com)



189 MOO 8 ,DONCHEDEE, DONCHEDEE,  
SUPHANBURI 72170 THAILAND